

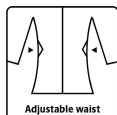
# ALLROUND WINTER

## COVERALL IN NYLON QUALITY

LR7033



Waterproof, windproof & breathable



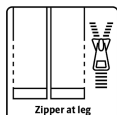
Adjustable waist



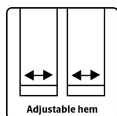
Adjustable cuffs



Kneepad pockets



Zipper at leg



Adjustable hem



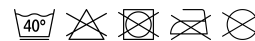
**Breathable, wind and waterproof with taped seams**

Waterproof:  $\geq 8.000$  MM  
Breathability:  $3.000\text{g}/\text{m}^2/24\text{h}$

### Colours and sizes

	07 Black	XXS - 16
	02 Red / 07 Black	XXS - 8XL
	06 Grey / 07 Black	XXS - 16

### Care instructions



Do not use any softeners  
Do not use bleach  
Wash with similar colours  
Ensure the zipper is fastened  
Dry inside out



GB

### Winter Coverall in lightweight materials with great comfort

210D Nylon Oxford with PU Coating,  $170\text{g}/\text{m}^2$   
Lining: 100% Polyester with  $160\text{g}/\text{m}^2$  PES padding

- Detachable hood with zipper and elastic drawstring
- Hidden two-way zipper with velcro closure
- Knitted storm cuffs in sleeves
- Sleeves and ankles with velcro adjustments
- Elasticated lower back
- Elasticated adjustments at waist
- Underarm zipper for ventilation
- Two chest pockets with velcro (extra pocket with zipper on both pockets)
- Hidden chest pocket with zipper
- Two side pockets with velcro
- Inside chest pocket with zipper
- Two back pockets with velcro
- Tool pocket on right thigh
- Cordura Kneepad pockets
- Hidden two-way zipper on the side of the legs
- Reflective details

**LYNGSØ**  
**RAINWEAR**