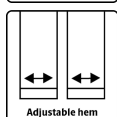
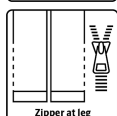
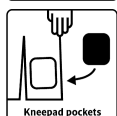
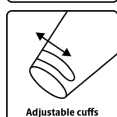
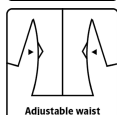


ALLROUND WINTER COVERALL IN POLYESTER QUALITY

LR4033



Breathable, waterproof and taped seams

Waterproof: ≥ 13.000 MM
Breathability: $6.000\text{g/m}^2/24\text{h}$

Colours and sizes

14 Olive / 07 Black XXS - 5XL

Care instructions



Do not use any softeners
Do not use bleach
Wash with similar colours
Ensure the zipper is fastened
Dry inside out



GB

Winter Coverall in strong quality

100% Polyester with TPU Membrane, 200 g/m^2
Lining: 100% Polyester with 140 g/m^2 PES padding

- Detachable hood with zipper and elastic drawstring
- Hidden two-way zipper with velcro closure
- Knitted storm cuffs in sleeves
- Adjustable and elasticated sleeves with velcro
- Elasticated adjustments at waist
- Underarm zipper for ventilation
- Detachable inside braces
- Belt straps and belt
- Hidden chest pocket with zipper
- Two side pockets with zipper
- One inside chest pocket
- Pocket on thigh with zipper
- Reinforcement on the back and knees
- Double kneepad pockets
- Hidden two-way zipper on the side of the legs
- Velcro adjustments at ankles
- Reflective details

LYNGSØ
RAINWEAR