

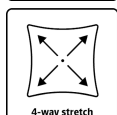
ALLROUND & LEISURE

BREATHABLE COVERALL IN STRETCH QUALITY

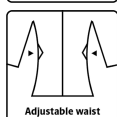
4WS-4073



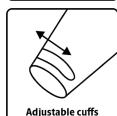
Waterproof, windproof & breathable



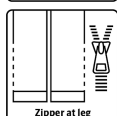
4-way stretch



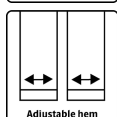
Adjustable waist



Adjustable cuffs



Zipper at leg



Adjustable hem



YKK zipper



Breathable, waterproof and taped seams

Waterproof: ≥ 20.000 MM
Breathability: 8.000g/m²/24h

Colours and sizes

07 Black

S - 5XL

Care instructions



Do not use any softeners
Do not use bleach
Wash with similar colours
Ensure the zipper is fastened
Dry inside out



GB

Winter Coverall in stretchable quality

100% Polyester Stretch with PU Membrane, 250 g/m²
Lining: 100% Polyester with 140 g/m² padding

- Hidden two-way YKK zipper with velcro closure
- Sleeves and ankles with velcro adjustments
- Drawstring at waist
- Fixed hood with drawstring
- Two side pockets with zipper
- Elastic storm cuffs in sleeves
- Two pockets on thighs with zipper
- One inside chest pocket
- Reinforcement on knees
- Zipper (46 cm, size L) at the ankles
- Reflective details

LYNGSØ
RAINWEAR